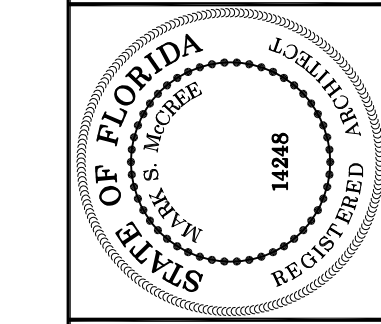


REVISIONS	BY
REVISED PER ARCHITECT'S NOTES	BGM

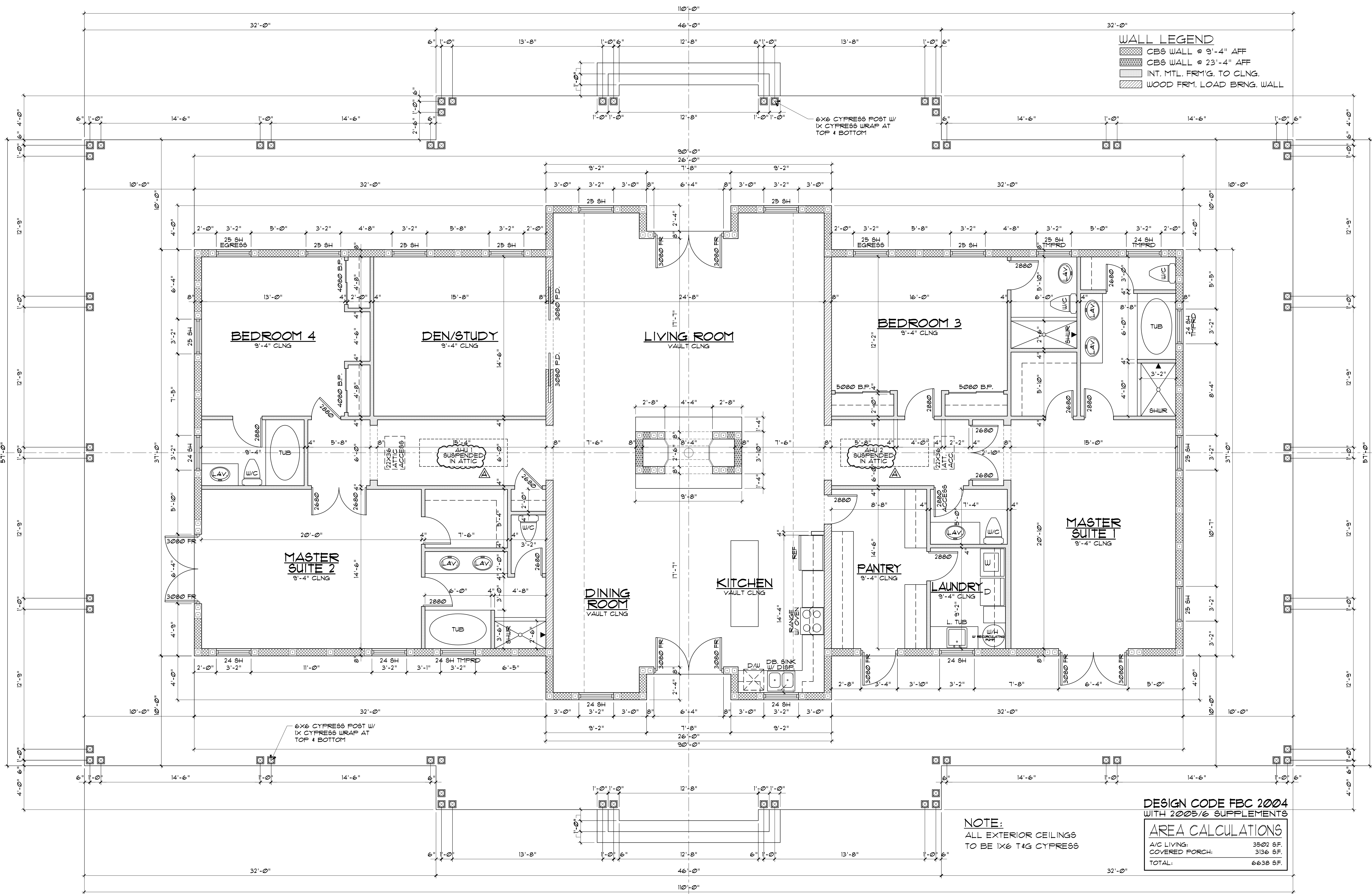
**AOC Enterprises, Inc.**  
 Okeechobee Architects Collaborative  
 AA20001573  
 180 NW BRADY AVE. UNIT C  
 OKEECHOBEE, FL 34972



**BENTZ BUILDING, LLC**  
 GENERAL CONTRACTOR  
 315 9th STREET  
 WEST PALM BEACH, FLORIDA 33401

**A NEW RESIDENCE FOR:  
 PINE CREEK SPORTING CLUB**  
 LOT No. 8  
 OKEECHOBEE COUNTY, FLORIDA

Date:	04-03-08
Scale:	1/4" = 1'-0"
Drawn:	MM/BGM
Job:	BENTZ MAIN HOUSE-14-NO. 8 COMMENTS
Sheet:	2
Of	9 Sheets



# FLOOR PLAN

SCALE: 1/4" = 1'-0"

SEE GARAGE ELECTRICAL FOR SERVICE RISER DIAGRAM AND A/C LOCATIONS  
 SEE SHEETS 8 & 9 FOR NOTES & DETAILS